
To: Suppliers

From: Carol Miller

Subject: 18-002 RFP Grounds Services

Addenda #1

A revision has been made to the above-referenced solicitation as indicated below.

When responding to a solicitation, the most recent information/forms posted to JCSS Purchas and Bids section of the website:

<http://jones.schooldesk.net/District/Departments/FacilitiesandOperations/tabid/98024/Default.aspx>

From Pre-proposal meeting on 9/25/2017

1. Change to the Scope:

All facilities will be included for the proposal. We have 9 campuses; four elementary, two middle school, two high school campuses and one pre-kindergarten.

Proposals will not include trimming shrubs, placing straw or edging. Schools may contract with you on their own if they chose to do so. You will need to treat this as a typical yard contract.

During the winter season, JCSS staff will be maintaining the grounds. They will clean large debris such as storm damage.

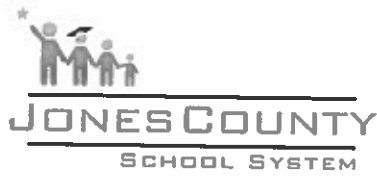
The property will need to be cut at least once per week. The goal is ensuring that the front of the schools is presentable.

Athletic space: At Jones County High School, do not cut football field, softball field or baseball field. You will cut the track. At Gray Station Middle and Clifton Ridge Middle, you will cut athletic fields.

On the Pre K campus, it will expand to the fuel depot space. A map has been included to assist with the boundary lines regarding where Pre K starts and stops in comparison to Jones County High.

Success for All
through academic Achievement, responsible Behavior, and ethical Character!





2. Contract period/terms:

Term will begin on April 15 of each year beginning in 2018 and end on October 1 of each year. Terms with auto renewal will look as follows: April 15-October 1, 2018; April 15-October 1, 2019; April 15-October 1, 2020.

3. Billing:

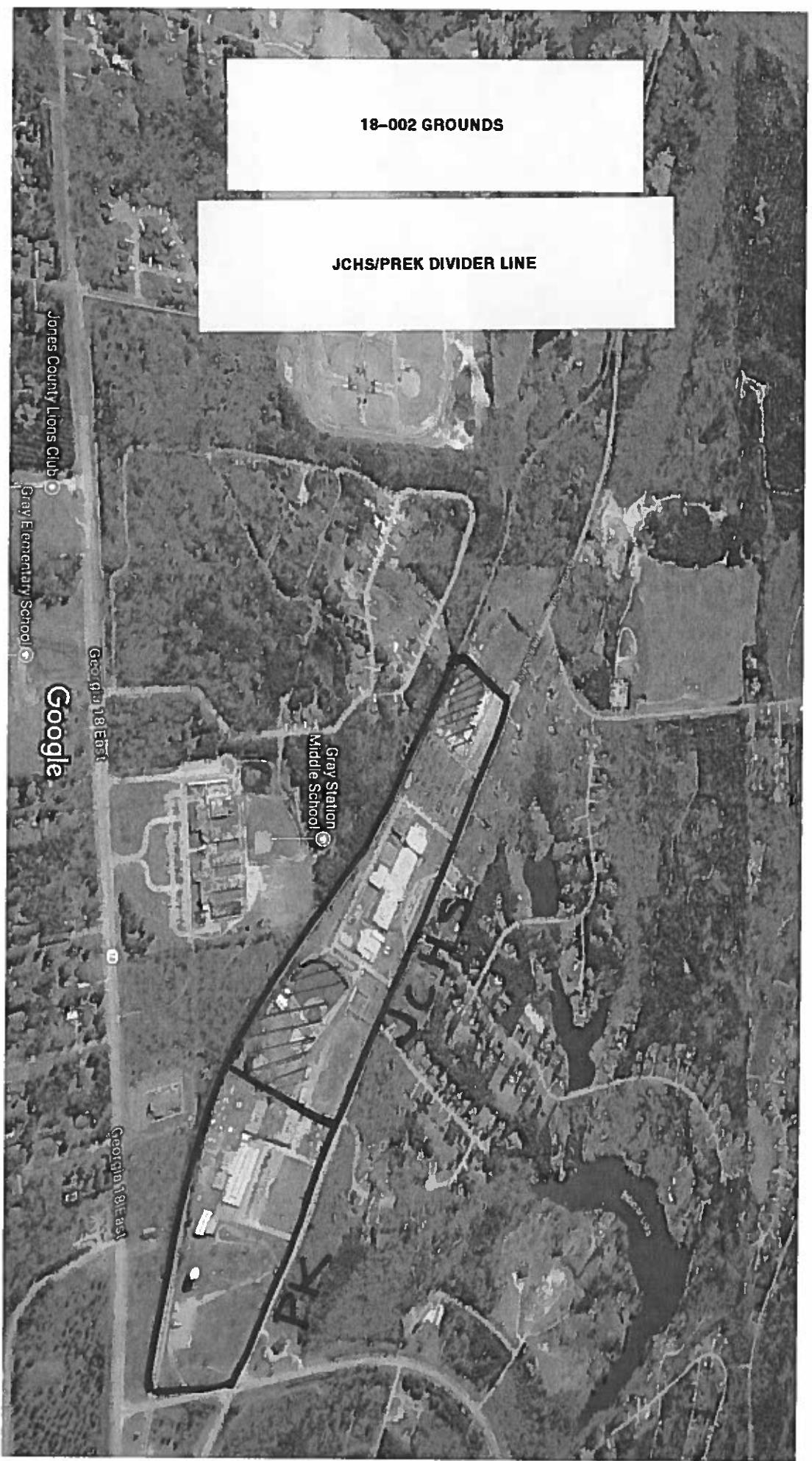
Invoices will be paid as submitted for payment as the job is completed. For clarification purposes, once you have completed the job you send in an invoice for that cut and it will be processed. Payment cannot be made for cuts that have not been completed.

4. Acreage/addresses for campuses:

Clifton Ridge Middle School, 169 Dusty Lane, Macon, GA 31211	84 acres
Dames Ferry Elementary, 545 GA Hwy 18 W, Gray, GA 31032	50 acres
Pre K Campus, 273 Railroad Street, Gray, GA 31032	30 acres
Gray Station Middle School, 324 GA Hwy 18 E, Gray, GA 31032	41.39 acres
Jones County High School, 339 Railroad Street, Gray, GA 31032	50 acres
9 th Grade Campus, 110 Maggie Califf Street, Gray, GA 31032	20 acres
Turner Woods Elementary, 144 Willie L Fluellen Dr, Gray, GA 31032	62 acres
Wells Elementary School, 101 Mattie Wells Dr., Macon, GA 31211	30 acres
Gray Elementary School, 365 Hwy 18 E, Gray, GA 31032	47 acres

5. See map that indicates boundary lines for Jones County High School and Pre K campus.

Google Maps 339 Railroad St



Handwritten signature or initials