

125 Stewart Avenue
Gray, GA 31032
(478) 986-3032 phone
(478) 986-4412 fax
www.jones.k12.ga.us



Charles Gibson, Superintendent
Ginger Bailey, Chairman
Mark W. Andrews
Dr. Nancy Nash
Ken Hamilton
Alfred L. Pitts

To: Suppliers

From: Carol Miller

Subject: 18-001 RFP Video Monitoring

Addenda #1

A revision has been made to the above-referenced solicitation as indicated below.

When responding to a solicitation, the most recent information/forms posted to JCSS Purchas and Bids section of the website:

<http://jones.schooldesk.net/District/Departments/FacilitiesandOperations/tabid/98024/Default.aspx>

From Pre-proposal meeting on 9/25/2017

1. Change to the Scope:

We will be adding our Pre-K Center as well. This brings the total number of systems to 5.

Changes to the Cost Proposal Form will be made and it will be Addendum 2.

Changes/Clarifications to Section 3.0, Specifications in Special Terms and Conditions

- a. Hikvision DS-2CD2042WD-I Exterior Camera Please see attached specification sheet from Hikvision. There will be two installed at each site.
- b. Hikvision DS-2CD2132F-I Interior Camera. Please see attached specification sheet from Hikvision. There will be one installed at each site.
- c. Hikvision DS-9632NI-ST, Network Video Recorder, Please see attached specification sheet from Hikvision. There will be one installed at each site.
- d. Each network video recorder will need 4TB (terabyte) hard drive storage utilizing the available SATA interfaces for 4 HDDs. This will provide at least 30 days of storage.

Success for All
through academic Achievement, responsible Behavior, and ethical Character!

125 Stewart Avenue
Gray, GA 31032
(478) 986-3032 phone
(478) 986-4412 fax
www.jones.k12.ga.us



Charles Gibson, Superintendent
Ginger Bailey, Chairman
Mark W. Andrews
Dr. Nancy Nash
Ken Hamilton
Alfred L. Pitts

e. Maps with the location of the IDF and MDF rooms as well as the location of the campus that the cameras will need to be installed.

2. Contract period/terms:

Correction was made to Section 4.0 Contract Terms-year was incorrect:

In compliance with O.C.G.A § 20-2-506, this Contract continues from the Effective Date until 12:00 midnight (EST) on December 31, 2017, at which time the Contract shall terminate absolutely and without further obligation or penalty on the part of the District. Unless the District resolves by majority vote on or before December 21st of any year to not renew this Contract for the following year, Contract shall automatically renew itself at 12:01 am on January 1, 2018, and at the same time each year thereafter, for one-year terms or to date of expiration if less than one-year term, without further action being required by either party hereto or until this Contract is fully performed or terminated in a manner provided in this Contract. If the District resolves or the Superintendent determines, not to renew this Contract, the District or Superintendent must notify Contractor in writing of the termination. Upon the termination, Contractor must perform all services and deliveries all schools required to be provided through December 31st, and the District must pay Contractor all fees due for accepted services and accepted goods through December 31st of that year. The terminated contract must not impose any further obligation or penalty on the part of the District.

3. Addresses for campuses:

Dames Ferry Elementary, 545 GA Hwy 18 W, Gray, GA 31032

Pre K Campus, 273 Railroad Street, Gray, GA 31032

Turner Woods Elementary, 144 Willie L Fluellen Dr, Gray, GA 31032

Wells Elementary School, 101 Mattie Wells Dr., Macon, GA 31211

Gray Elementary School, 365 Hwy 18 E, Gray, GA 31032

Carol Miller, APCA

Success for All

through academic Achievement, responsible Behavior, and ethical Character!

JONES COUNTY SCHOOL SYSTEM
 GRAY, GEORGIA
 ADDENDUM 2
COST PROPOSAL FORM

(Submit in separate, sealed envelope.)

Pricing must be submitted on the form(s) below.

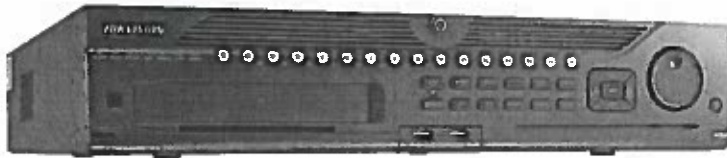
Item #	Description	Estimated Quantity	Unit Price
1	HIKVISION DS-2CD2132F-I IR DOME NETWORK CAMERA (INTERIOR) 1 PER SITE TOTAL OF 5		
2	INSTALLATION OF INTERIOR HIKVISION CAMERAS		
3	HIKVISION DS-2CD2042WD-I SERIES IR MINI BULLET NETWORK CAMERA (EXTERIOR) 2 PER SITE TOTAL OF 10		
4	INSTALLATION OF EXTERIOR HIKVISION CAMERAS		
5	HIKVISION DS-9632NI-ST NETWORK VIDEO RECORDER 32 CHANNEL 1 PER SITE TOTAL OF 5		
6	INSTALLATION OF HIKVISION NVR		
7	USER TRAINING		
8	4TB (terabyte) hard drive storage utilizing the available SATA interfaces for 4 HDDs		
X	Per Section X.0 of the Special Terms & Conditions, in the event JCSS has failed to include an item(s), responding vendors are asked to provide a fee structure for additional, related items that may be purchased during the award period. Vendors are to identify the pricing source and the associated fee structure in the space to the right.		
X	Per Section X.0 of the Special Terms & Conditions, in the event JCSS has failed to anticipate all service needs, responding vendors are asked to provide a fee structure for additional, related services that may be needed during the award period. Vendors are to provide an hourly rate in the space to the right for service needs that may be identified at a later date. If there are different rates, please provide any/all rate information.		

Please indicate required lead time upon receipt of order: _____

Supplier Name: _____

RCM

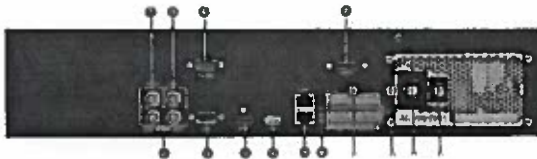
DS-9600NI-ST Series Network Video Recorder (NVR)



Key Features

- Up to 200 Mbps Incoming Bandwidth (32/64 ch)
- Third-Party Network Cameras Supported
- Up to 6 Megapixels Resolution Recording
- Independent HDMI and VGA Output at Up to 1920x1080p Resolution
- Dual Gigabit Network Interfaces
- 8 SATA, 1 eSATA, 3 USB 2.0 and DVD-RW Support

Rear Panel of DS-9600NI-ST



1. Video out
2. CVBS audio out and VGA audio out
3. Line in
4. RS-232 serial interface
5. VGA interface
6. HDMI interface
7. eSATA interface
8. LAN1, LAN2 network interface
9. Termination switch
10. RS-485 serial interface, keyboard interface, alarm I/O
11. GND
12. 100 to 240 VAC Power Input
13. Power Switch
14. USB Interface

Order Models

DS-9616NI-ST
DS-9632NI-ST
DS-9664NI-ST

	DS-9616NI-ST	DS-9632NI-ST	DS-9664NI-ST
Video/Audio Input			
IP Video Input	16-ch	32-ch	64-ch
Compression Format	H.264, H.264+		
Two-Way Audio Input	1-ch, BNC (2.0 Vp-p, 1 k Ω)		
Incoming Bandwidth	100 Mbps (100 Mbps w/RAID)	200 Mbps (100 Mbps with RAID)	
Outgoing Bandwidth	240 Mbps	160 Mbps	
Remote Connection	128		
Video/Audio Output			
Recording Resolution	6 MP/5 MP/3 MP/1080p/UXGA/720p/VGA/4CIF/DCIF/2CIF/CIF/QCIF		
CVBS Output	1-ch, BNC (1.0 Vp-p, 75 Ω) Resolution: 704 × 480 (NTSC)		
HDMI Output	1-ch, resolution: 1920 × 1080p, 1600 × 1200, 1280 × 1024, 1280 × 720, 1024 × 768, independent		
VGA Output	1-ch, resolution: 1920 × 1080p, 1600 × 1200, 1280 × 1024, 1280 × 720, 1024 × 768, independent		
Audio Output	2-ch, BNC (linear, 600 Ω)		
Decoding			
Live View/Playback Resolution	6 MP/5 MP/3 MP/1080p/UXGA/720p/VGA/4CIF/DCIF/2CIF/CIF/QCIF		
Capability	16-ch @ 720p, 8-ch @ 1080p		
Hard Disk			
SATA	8 SATA interfaces for 4 HDDs (default) + 1 DVD-R/W (option), or 8 HDDs		
eSATA	1 eSATA interface		
Capacity	Up to 6 TB capacity for each disk		
Disk Array			
Array Type	RAID 0, RAID 1, RAID 5, RAID 10		
Number of Arrays	8		
Number of Virtual Disks	8		
External Interface			
Network Interface	2 RJ-45 10/100/1000 Mbps self-adaptive Ethernet interfaces		
Serial Interface	RS-232; RS-485; keyboard		
USB Interface	3 × USB 2.0		
Alarm In/Out	16/4		
Standards	Complies with ONVIF (Profile S), PSIA, CGI ASAPI		
General			
Power Supply	100 to 240 VAC, 6.3 A, 50 to 60 Hz		
Consumption	≤ 45 W (without HDD)		
Working Temperature	-10° C to +55° C (14° F to 131° F)		
Working Humidity	10% to 90%		
Chassis	19-inch rack-mounted 2U chassis		
Dimensions (W x D x H)	445 mm × 470 mm × 90 mm		
Weight	≤ 8 kg/17.64 lb (without hard disk or DVD-R/W)		

RAM

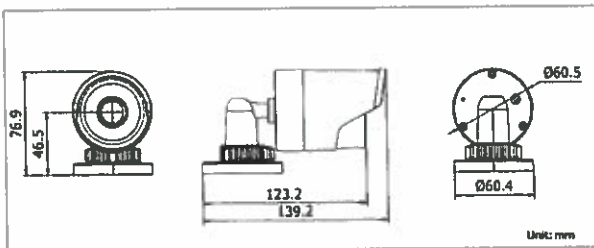
DS-2CD2042WD-I 4 MP WDR Mini Bullet Network Camera



Key Features

- 4 Megapixel High Resolution
- Full HD1080p Video
- Dual Video Streams
- 4 mm or 6 mm Fixed Lens
- 120 dB Wide Dynamic Range
- 3D Digital Noise Reduction
- Smart Features
- PoE (802.3af)
- IR Range 30 Meters (~100 Feet)
- IP67 Protection

Dimensions



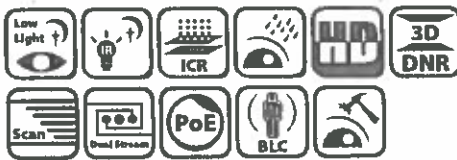
Order Model

DS-2CD2042WD-I

DS-2CD2042WD-I	
Camera	
Image Sensor	1/3" progressive scan CMOS
Minimum Illumination	Color: 0.028 @ f/2.0; BW: 0 with IR
Shutter Speed	1/3 s to 1/10,000 s
Lens	4 mm, 6 mm option
Angle of View	82° (4 mm), 55° (6 mm)
Lens Mount	M12
Day/Night	IR cut filter with auto switch
DNR	3D DNR
Wide Dynamic Range	120 dB
Pan/Tilt/Rotation	3-axis positioning
Compression Standards	
Video Compression	H.264+/H.264/MJPEG
H.264 Type	Main profile
Video Bit Rate	32 Kbps to 16 Mbps
Dual Streams	Yes
Image	
Maximum Resolution	2688 × 1520
Frame Rate	20 fps (2688 × 1520); 30 fps (1920 × 1080), (1280 × 720)
Image Setting	Compression, color, saturation, brightness, contrast, sharpness, rotate mode, privacy mask
Backlight Compensation	Yes, zone configured
Region of Interest (ROI)	Yes, 4 regions
Analytics	
Smart Features	Line crossing detection (4 lines), intrusion detection (4 regions)
Network	
Network Storage	NAS (supports NFS, SMB/CIFS), ANR
Alarm Triggers	Motion detection, line crossing detection, intrusion detection, tamper alarm, network disconnect, IP address conflict, storage exception
Protocols	TCP/IP, UDP, ICMP, HTTP, HTTPS, FTP, DHCP, DNS, DDNS, RTP, RTSP, RTCP, PPPoE, NTP, UPnP, SMTP, SNMP, IGMP, 802.1X, QoS, IPv6, Bonjour
Security	Three level user authentication, password authorization, HTTPS and SSH certificate, IEEE802.1X, basic and digest authentication, watermark, IP address filtering, log-in lockout
Standards	ONVIF (PROFILE S, PROFILE G), PSIA, CGI, ISAPI
Interface	
Communication	1 RJ-45 10M/100M Ethernet port
General	
Operating Conditions	-30° C to 60° C (-22° F to 140° F), humidity 95% or less (non-condensing)
Power	12 VDC ±10%, PoE(802.3af)
Power Consumption	Maximum 5 W
IR Range	30 meters (~100 feet)
Ingress Protection	IP67
Dimensions	60.4 mm × 76.9 mm × 139.2 mm (2.4" × 3.0" × 5.5")
Weight	500 g (1.1 lbs)

RAM

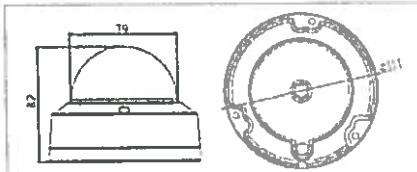
DS-2CD2100F-I Series IR Dome Network Camera



Key Features

- 1.3 MP/3 MP High Resolution
- HD Real-Time Video
- 3D DNR, DWDR, and BLC
- IR LEDs: Up to 100 Feet
- IP66 Protection
- IK10 Vandal Resistant
- PoE (802.3af)
- On-Board Storage (Up to 128 GB)

Dimensions



Accessories



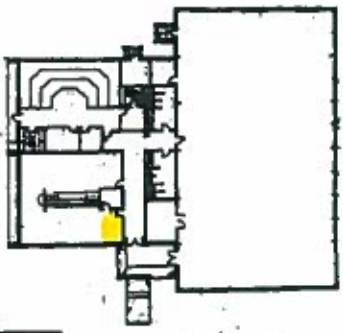
Order Models

- 1.3 MP: DS-2CD2112F-I
- 3.0 MP: DS-2CD2132F-I

	DS-2CD2112F-I	DS-2CD2132F-I
Camera		
Image Sensor	1/3" progressive scan CMOS	
Minimum Illumination	0.028 lux @ f/2, AGC on, 0 lux with IR	0.19 lux @ f/1.2, AGC on, 0 lux with IR
Shutter Speed	1/3 sec. to 1/100 000 sec.	
Lens	4 mm @ f/2.0 (2.8 mm, 6 mm, 12 mm optional)	4 mm @ f/2.0 (2.8 mm, 6 mm, 12 mm optional)
	Angle of view: 92.5° (2.8 mm), 73.1° (4 mm), 46° (6 mm), 22° (12 mm)	2048 × 1536: Angle of view: 86° (2.8 mm), 70° (4 mm), 43.3° (6 mm), 20.6° (12 mm)
Lens Mount	M12	
Angle Adjustment	Pan: 0° to 355°, tilt: 0° to 75°, rotation: 0 to 355°	
Digital Noise Reduction	3D DNR	
Wide Dynamic Range	Digital WDR	
Day/Night	IR cut filter with auto switch	
Compression Standard		
Video Compression	H.264/MJPEG	
H.264 Codec Profile	Main profile	
Bit Rate	32 Kbps to 16 Mbps	
Dual Stream	Yes	
Image		
Max. Image Resolution	1280 × 960	2048 × 1536
Frame Rate	30 fps (1280 × 960), (1280 × 720), (704 × 576), (640 × 480)	20 fps (2048 × 1536), 30 fps (1920 × 1080), (1280 × 720)
Image Settings	Saturation, brightness, sharpness, contrast	
BLC	Yes, zone configurable	
ROI	Yes, up to 3 configurable areas	
Network		
Network Storage	Local storage: built-in microSD/SDHC/SDXC card slot, up to 128 GB; NAS	
Alarm Triggers	Line crossing detection, intrusion detection, motion detection, dynamic analysis, tampering alarm, network disconnect, IP address conflict, storage full, storage error	
Protocols	TCP/IP, ICMP, HTTP, HTTPS, FTP, DHCP, DNS, DDNS, RTP, RTSP, RTCP, PPPoE, NTP, UPnP, SMTP, SNMP, IGMP, 802.1X, QoS, IPv6, Bonjour	
System Compatibility	ONVIF, PSIA, CGI, ISAPI	
Security	Three level user authentication, password authorization, HTTPS and SSH certificate, IEEE802.1X, basic and digest authentication, watermark, IP address filtering, log-in lockout	
General Functions	Flickerless, dual stream, heartbeat, mirror, password protection, watermark	
Interface		
Communication Interface	1 RJ-45 10M/100M Ethernet interface	
Smart Features	Line crossing, intrusion detection	
General		
Operating Conditions	-30° C to 60° C (-22° F to 140° F); humidity 95% or less (non-condensing)	
Power Supply	12 VDC ±10%; PoE (802.3af)	
Power Consumption	Maximum 5 W (with IR cut filter on)	
Impact Protection	IK10	
Ingress Protection	IP66	
IR Range	100 feet	
Dimensions	Ø111 mm × 82 mm (4.4" × 3.2")	
Weight	500 g (1.1 lbs.)	

RAW

RW



BUILDING 2070



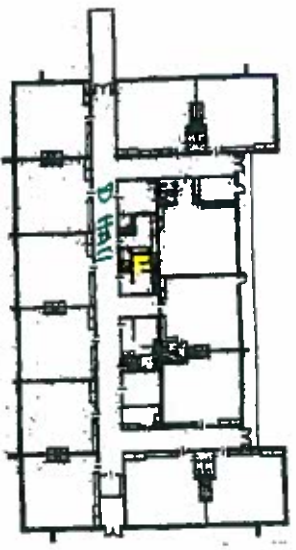
BUILDING 2030



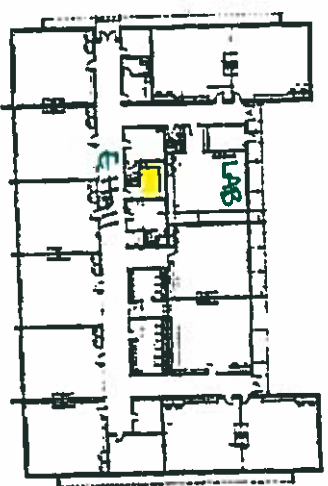
BUILDING 2030



BUILDING 2010



BUILDING 2010



BUILDING 2080



SCALE 1" = 45'

ID/FIND MAP

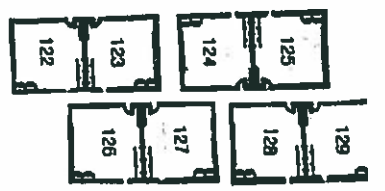
JONES CO PRE K
273 RAILROAD ST
GRAY, GA 31032

COLOR MAP

SCALE 1" = 44'



DAMES FERRY ELEMENTARY SCHOOL
 545 HWY 18 W.

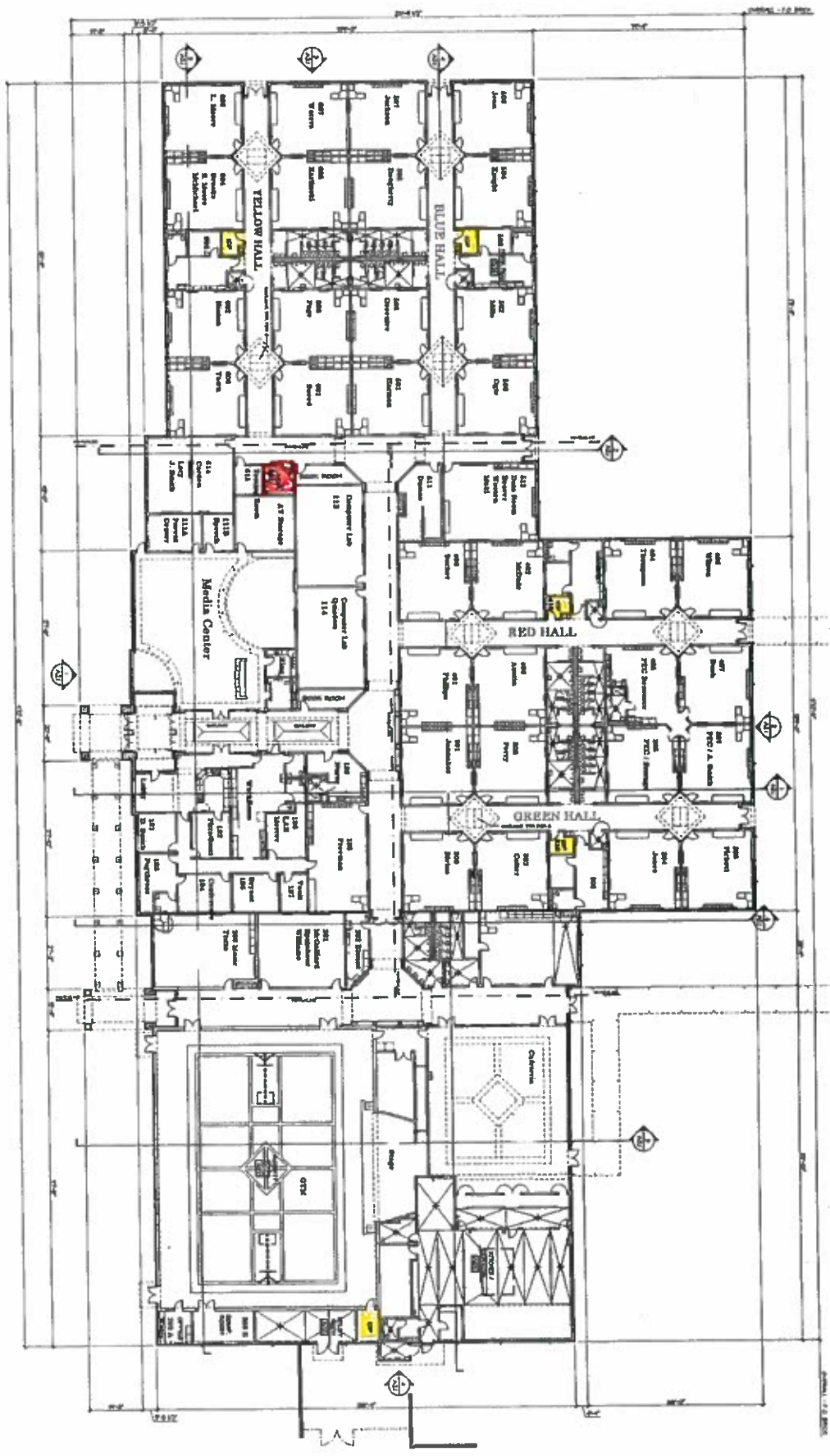


ID/INDF MAP

COLOR MAP

12

REF

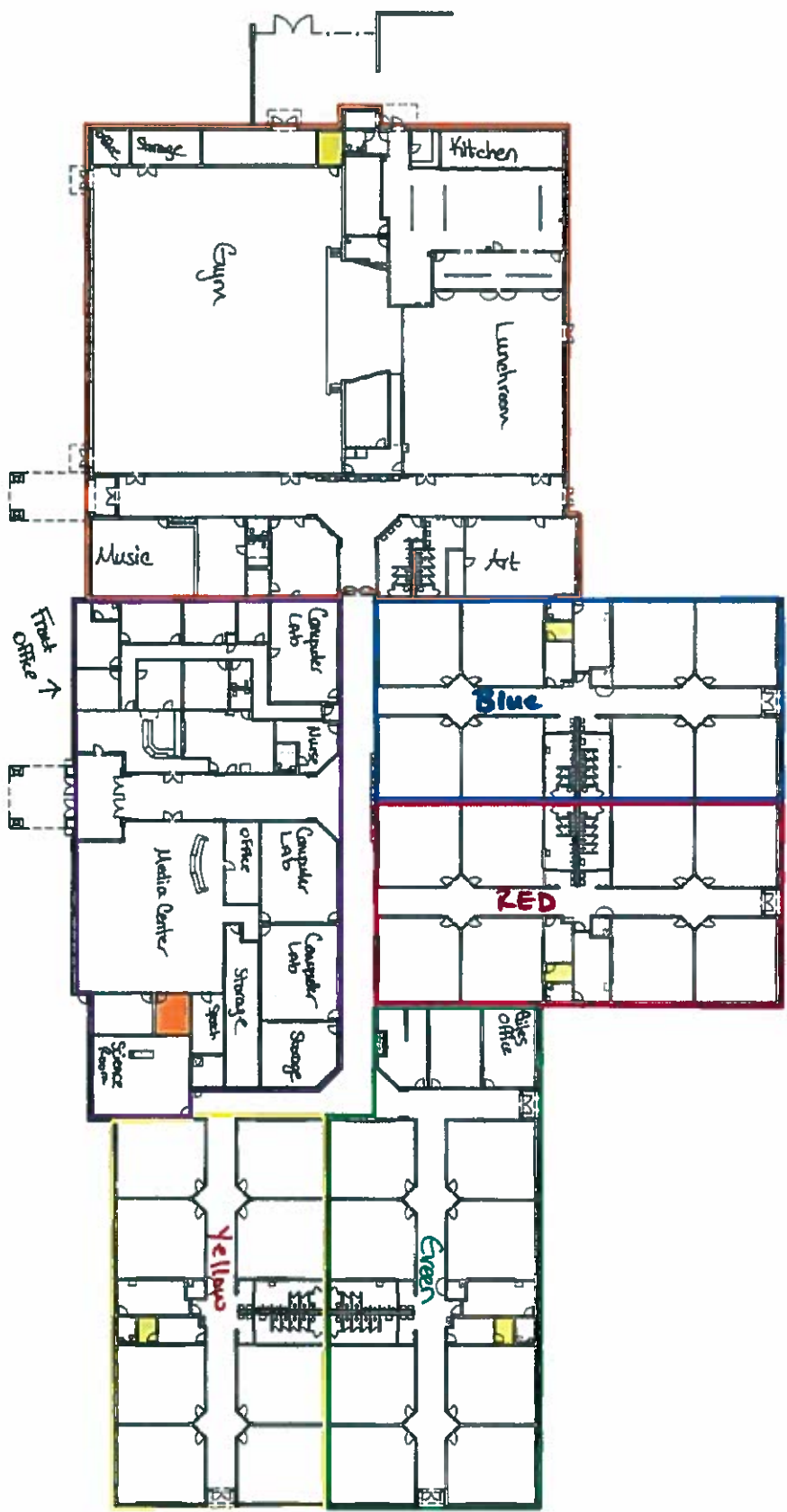


NEW GRAY ELEMENTARY
SCHOOL
 GRAY, GEORGIA
 JONES COUNTY SCHOOLS
 1110
 1111
 1112
 1113
 1114
 1115
 1116
 1117
 1118
 1119
 1120
 1121
 1122
 1123
 1124
 1125
 1126
 1127
 1128
 1129
 1130
 1131
 1132
 1133
 1134
 1135
 1136
 1137
 1138
 1139
 1140
 1141
 1142
 1143
 1144
 1145
 1146
 1147
 1148
 1149
 1150
 1151
 1152
 1153
 1154
 1155
 1156
 1157
 1158
 1159
 1160
 1161
 1162
 1163
 1164
 1165
 1166
 1167
 1168
 1169
 1170
 1171
 1172
 1173
 1174
 1175
 1176
 1177
 1178
 1179
 1180
 1181
 1182
 1183
 1184
 1185
 1186
 1187
 1188
 1189
 1190
 1191
 1192
 1193
 1194
 1195
 1196
 1197
 1198
 1199
 1200

IDFIMDF MAP

COLOR MAP

REN



TURNER WOODS ELEMENTARY SCHOOL



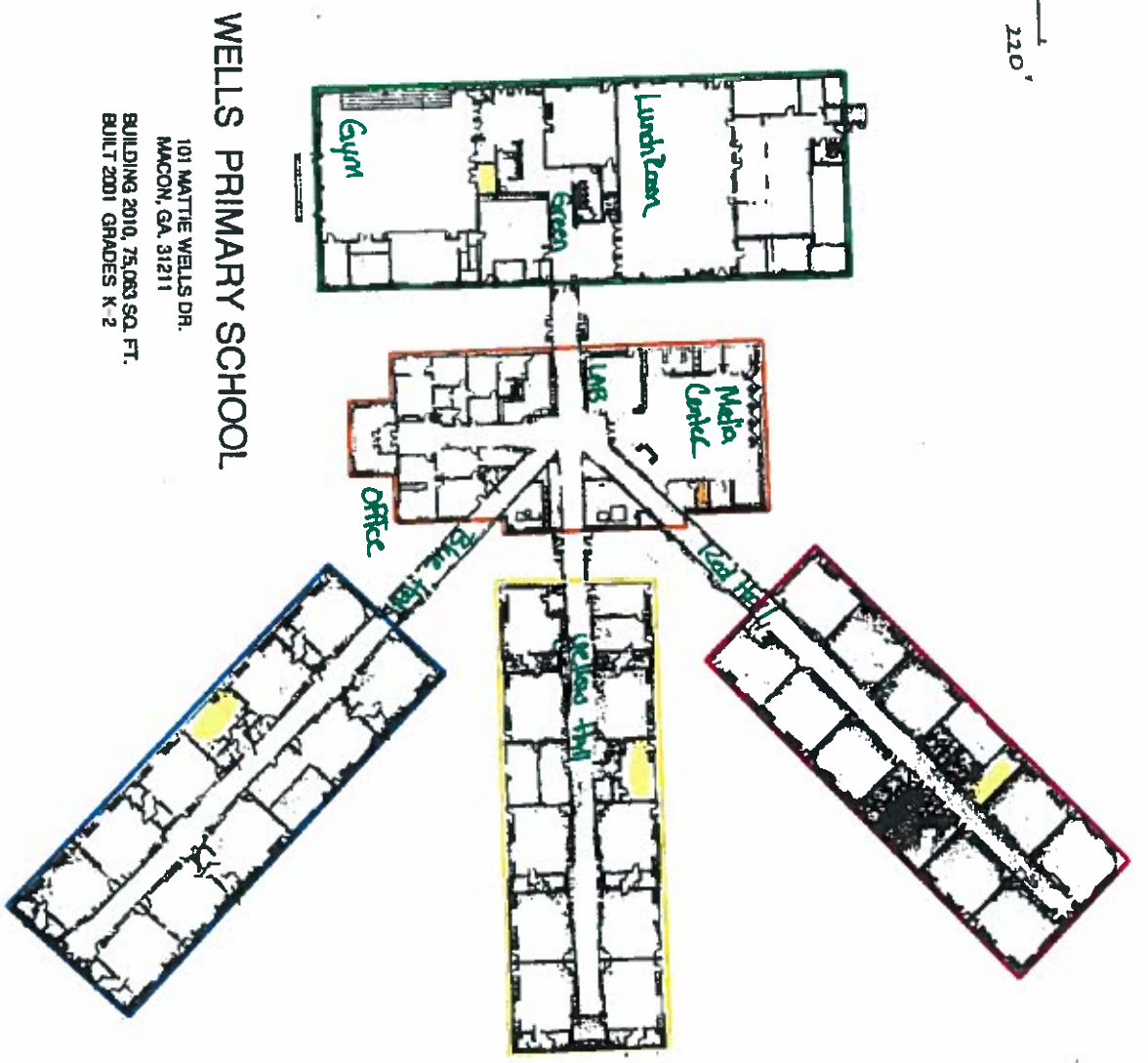
**ROBERTSON LOYA ROOF
ARCHITECTS & ENGINEERS**

2407 Preston Ridge Road, Suite 275, Atlanta, Georgia 30320
770-614-2800 Fax 770-250-0216

IDENTIFY MAP

COLOR MAP

SCALE 1" = 65'



WELLS PRIMARY SCHOOL

101 MATTHE WELLS DR.
 MACON, GA. 31211
 BUILDING 2010, 75,083 SQ. FT.
 BUILT 2001 GRADES K-2

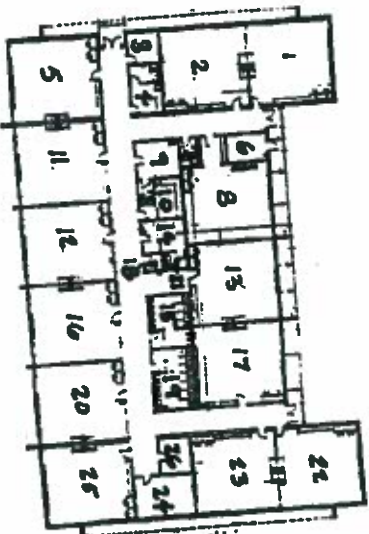
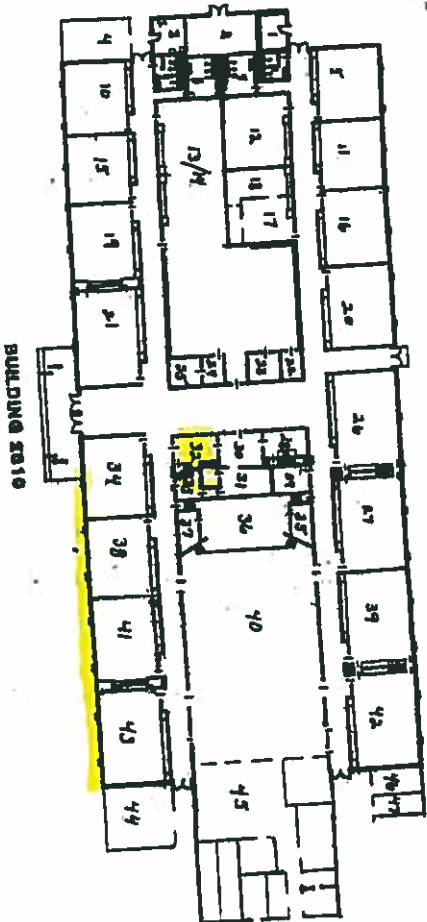
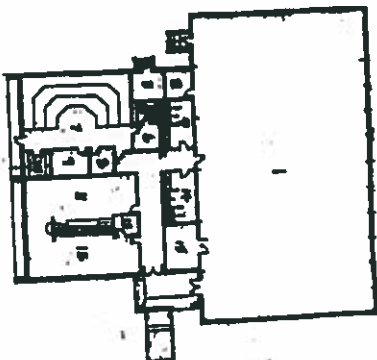
10F/MDF MAP

COLOR MAP

Rem

CAMERA COVERAGE

AREA MAP



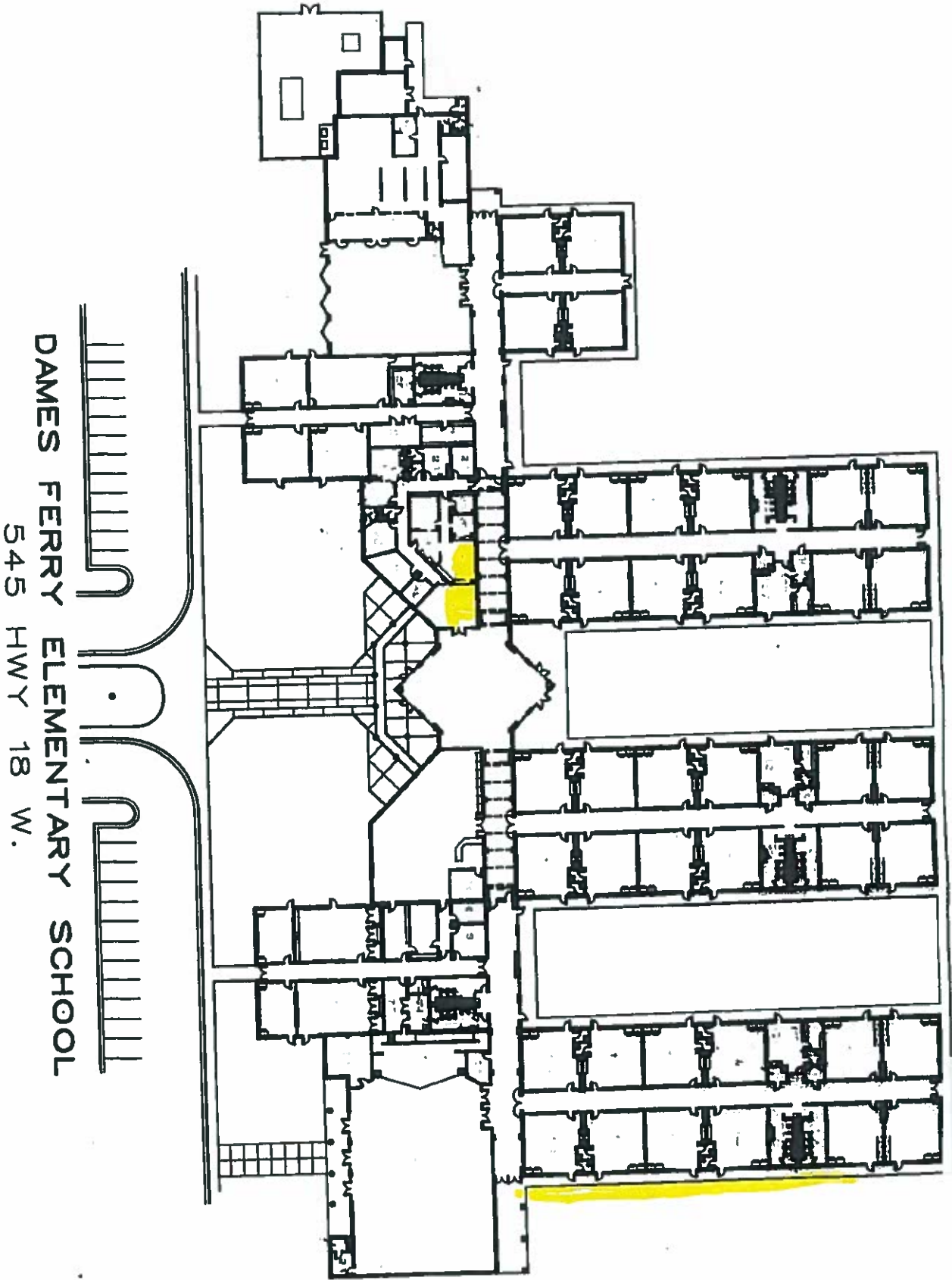
COLOR MAP

Rm

JONES COPPER K
273 RAILROAD ST
GRAY, GA 31032

CAMERA COVERAGE

AREA MAP

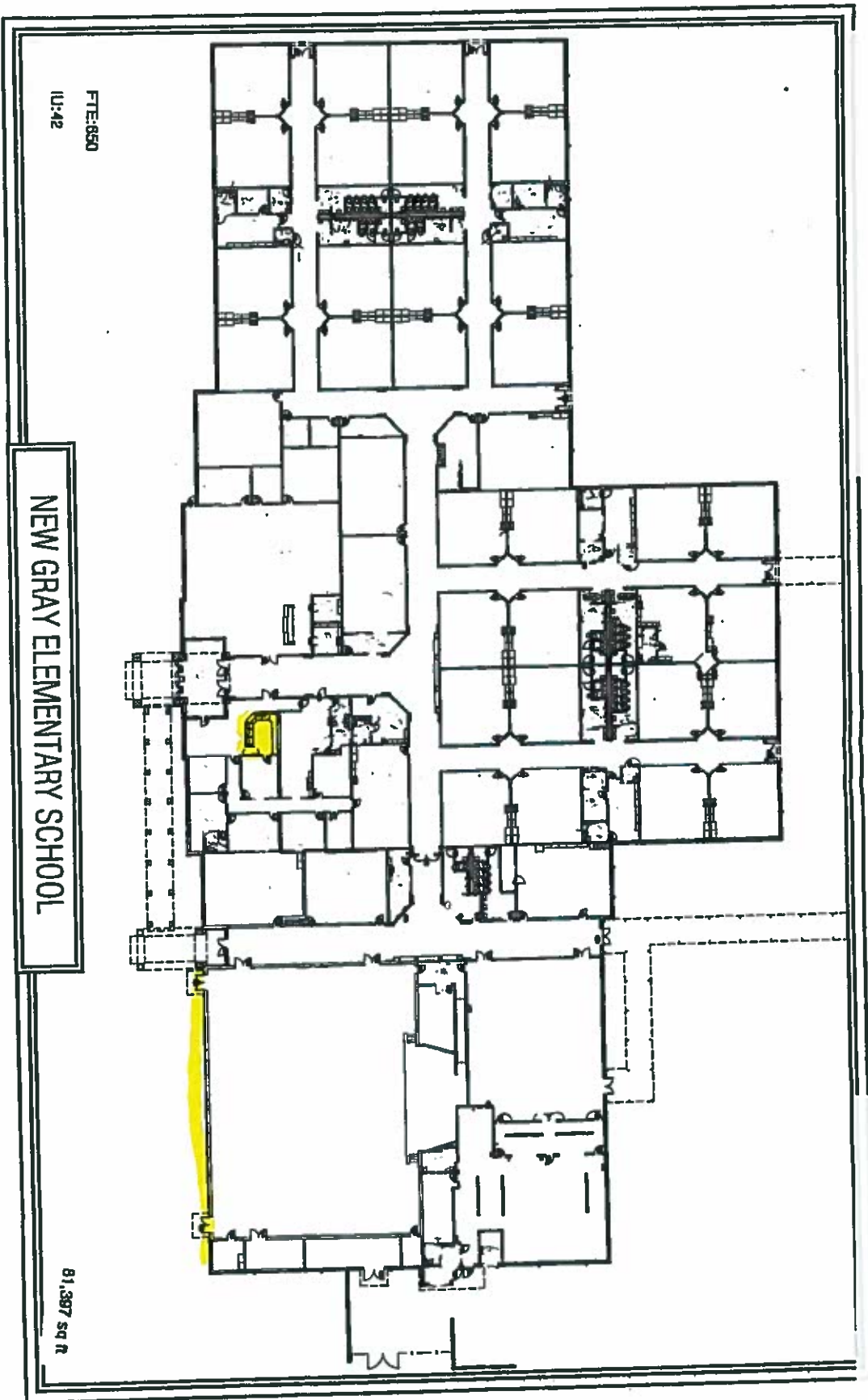


DAMES FERRY ELEMENTARY SCHOOL

545 HWY 18 W.

COLOR MAP

PKM



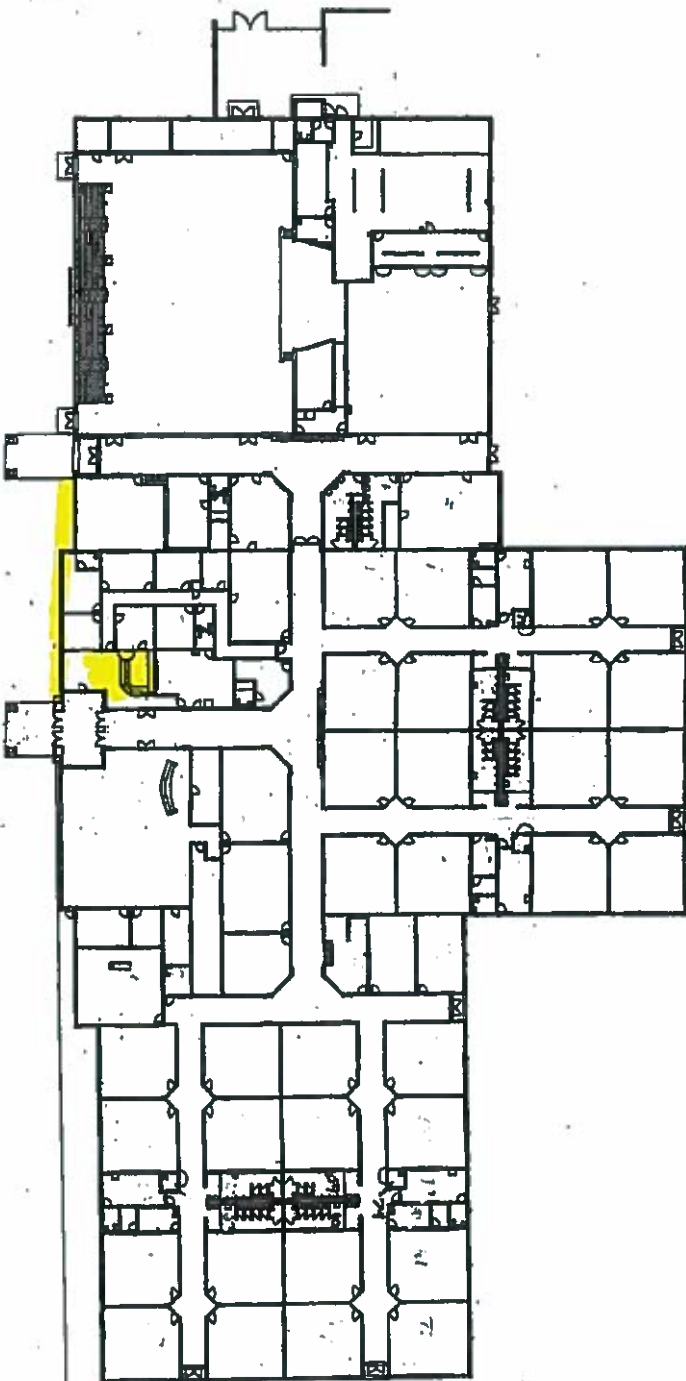
FTE: 650
IU: 42

NEW GRAY ELEMENTARY SCHOOL

365 Hwy. 16
Gray, GA 31032

81,397 sq ft

RCW

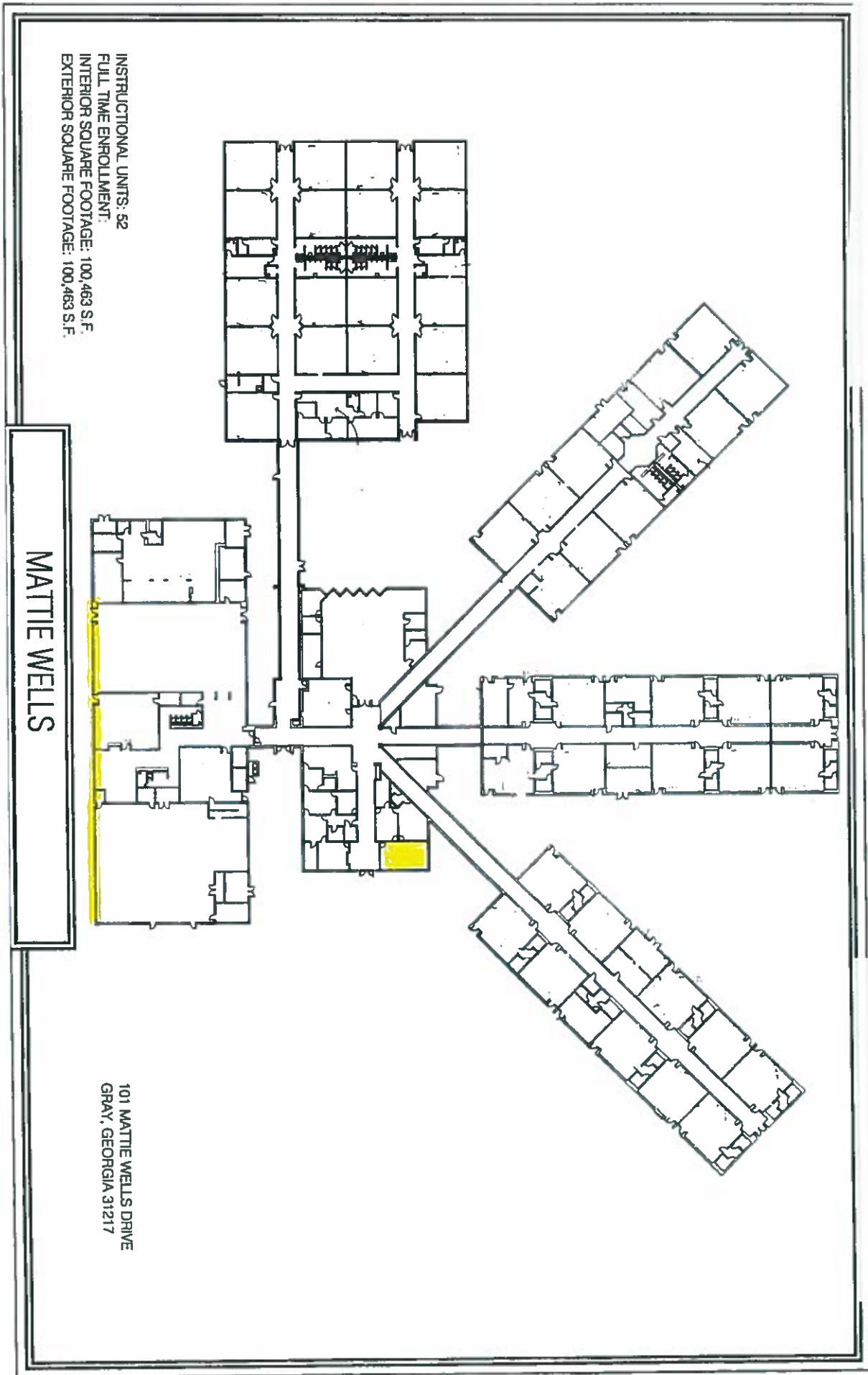


BUILDING
CONSTRUCTED 2004

TURNER WOODS ELEMENTARY SCHOOL
WILLIE L. FUELLEN DRIVE
JONES COUNTY, GEORGIA

COLOR MAP

RCW



MATTIE WELLS

INSTRUCTIONAL UNITS: 52
FULL TIME ENROLLMENT:
INTERIOR SQUARE FOOTAGE: 100,463 S.F.
EXTERIOR SQUARE FOOTAGE: 100,463 S.F.

101 MATTIE WELLS DRIVE
GRAY, GEORGIA 31217

RCR